

# Optometric Residency Program



## CORNEA & CONTACT LENSES

PACIFIC UNIVERSITY & ASSOCIATED CLINICS  
FOREST GROVE & PORTLAND, OREGON

---

SPONSOR & EDUCATIONAL AFFILIATE: PACIFIC UNIVERSITY COLLEGE OF OPTOMETRY  
FOREST GROVE, OREGON

---

### MISSION

The mission of the Pacific University College of Optometry Cornea and Contact Lens Residency Program is to prepare qualified graduates of optometry for careers in contact lens education, independent practice, clinical research or a combination

thereof by providing advanced practical experience and academic teaching exposure with an emphasis in contact lenses and anterior segment conditions.



## GENERAL INFORMATION

### Residency Program Supervisor

BETH T. KINOSHITA, O.D., F.A.A.O.

### Length of Program

54 weeks

### Starting Date

July 15

### Number of Positions

One (1) residency position available each year.

### Annual Salary

Periodically adjusted. Please contact residency supervisor for current salary information.

### Hours

Expected range of hours of attendance in a typical week of activities is 40-60 hours.

### Leave

Residents earn ten days paid annual leave and ten days paid sick leave per year.

### Professional Liability Protection

Provided by Pacific University.

### Health Insurance Benefits

Health and dental insurance is provided through Pacific University.

### Certificate of Completion

Once all published requirements for completion have been met, the resident will be presented with a Certificate of Completion.

## PROGRAM GOALS

- 1 Provide opportunities for in-depth clinical experience specializing in contact lenses and anterior segment condition.
- 2 Encourage the resident to develop as a specialist by serving as a consulting/attending doctor for optometry interns.
- 3 Offer experience in didactic and laboratory contact lens education.
- 4 Encourage the resident's pursuit of scholarly activities.
- 5 Stimulate a commitment to service in the resident.

## RESIDENCY EXPERIENCE

### Clinical Activities

The resident is provided the opportunity to work in a variety of clinical settings with a large number of diverse patient encounters as well as exposure to a variety of clinical conditions within contact lens practice and anterior segment pathology.

### Scholarly Activities

The resident is required to complete a research paper, literature review or case report of publishable quality by the end of the residency program and present at the annual Northwest Optometric Residents' Conference.

Residents are encouraged to attend Pacific University-sponsored continuing education programs and the registration fees are waived. Travel, lodging, meals and incidentals, remain the resident's responsibility.

### Teaching & Lecturing

The resident serves as a co-instructor for second and third year contact lens laboratory sessions during the spring and summer terms. Lecture experience is provided at the annual Northwest Optometric Residents' Conference where the resident presents an original lecture, case, or summary of research.

### On-Call Duty

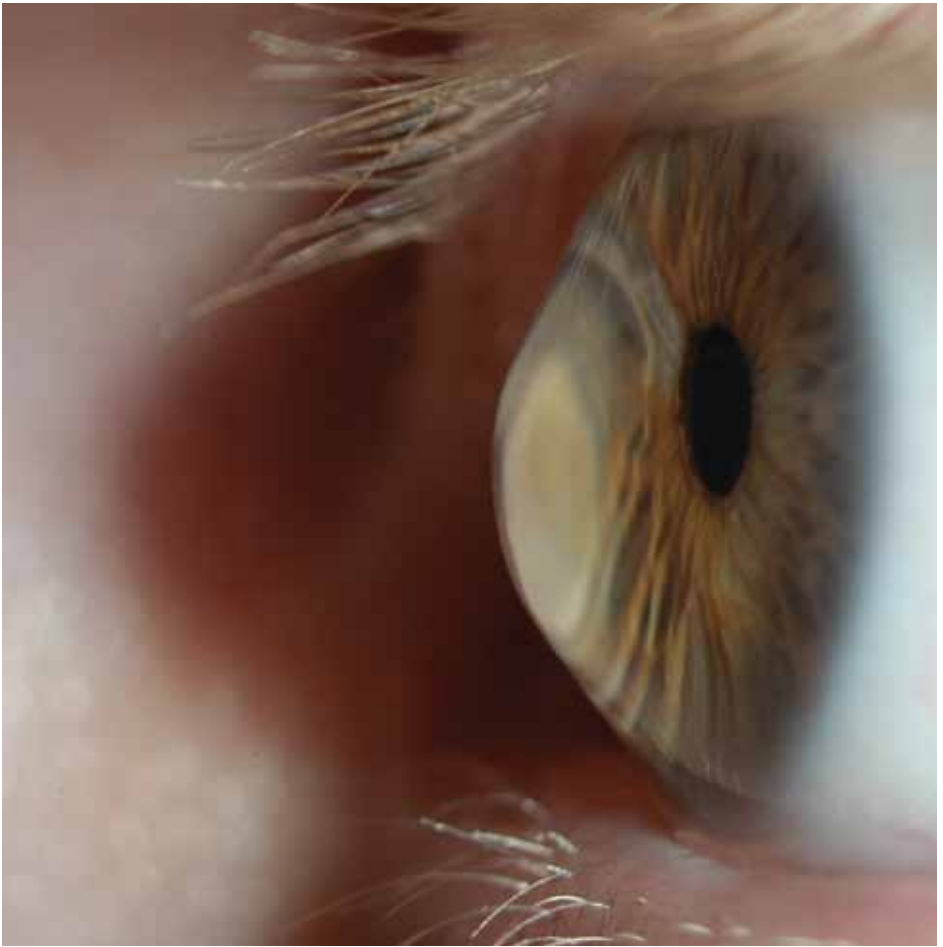
On a rotating basis, the residents will be assigned as the primary on-call provider after hours for the clinics of Pacific University College of Optometry. The on-call duty is shared with the Pacific University teaching fellows and the Portland VAMC residents.

### Weekly Optometric Seminar

Each week, the resident meets with the contact lens faculty for a contact lens-related seminar. Journals are reviewed, interesting and difficult cases are discussed and there is a presentation on a contact lens-related topic by one of the attendees.

### Administration/Research Time

The resident is scheduled up to one half day each week for administrative time. This time is intended to be used for research, review of charts and independent study.



## CLINICAL FACILITIES

### Therapeutic Contact Lens Clinic

The Therapeutic Contact Lens Clinic is a tertiary referral center located in both the Pacific University Forest Grove and Portland Vision Centers. The resident provides direct patient care in primarily medically-based contact lens fittings and management of the irregular cornea. In addition to acquiring specialty contact lens fitting experience for keratoconus, post-surgical and post-trauma corneas, aphakia, orthokeratology, presbyopia and high astigmatism, the resident is exposed to cutting edge lens designs and custom products in the clinic.

### Forest Grove Family Vision Center

The resident provides direct patient care and is also given the opportunity to participate in clinical mentoring of optometry student interns throughout the year. The patient population consists mainly of university students and patients from Forest Grove and the surrounding areas. This site offers experience in fitting rigid and soft contact lenses for cosmetic as well as for astigmatism, presbyopia, high refractive error and keratoconus. Complications of contact lens wear are also managed routinely at this clinic.

### Portland Veterans Affairs Medical Center (VAMC)

At this unique site the resident spends one half day providing primary patient care and one half day staffing the contact lens clinic. As the sole contact lens clinic within the Portland VAMC system, the resident participates in specialty contact lens fitting for aphakia, post-trauma and penetrating keratoplasty, keratoconus and high refractive error.

## APPLICATION PROCESS

- 1** Candidates must apply to this residency program through the Optometric Residency Matching Services (ORMS), Inc. online at [www.optometryresident.org](http://www.optometryresident.org)
- 2** Furnish official transcripts of all optometric and undergraduate education.
- 3** Furnish official NBEO scores.
- 4** Three letters of reference from individuals familiar with the applicant's clinical and academic performance.
- 5** Be available for a formal interview with the Residency Committee.
- 6** Application Deadline: February 1

## WEEK IN THE LIFE OF A RESIDENT

The one year residency consists of three rotations.

### FALL ROTATION

#### monday

MORNING

Direct Patient Care, Portland VAMC

AFTERNOON

VA Contact Lens Clinic Intern Mentoring

#### tuesday

Direct Patient Care at the Forest Grove  
Therapeutic Contact Lens Clinic

#### wednesday

Direct Patient Care at the Portland  
Therapeutic Contact Lens Clinic

#### thursday

MORNING

Resident Conference

AFTERNOON

Research and Creative Work

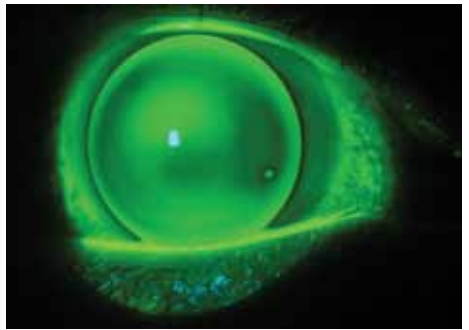
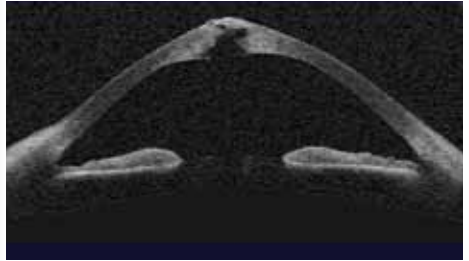
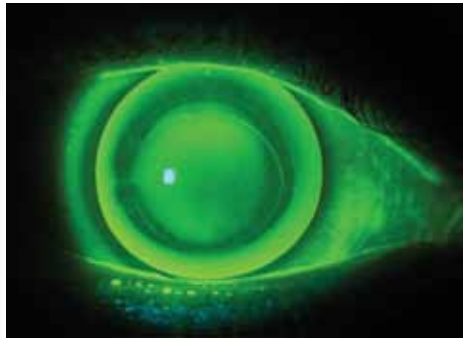
#### friday

MORNING

Direct Patient Care at the Forest Grove  
Therapeutic Contact Lens Clinic

AFTERNOON

Forest Grove Contact Lens Clinic Fourth  
Year Intern Co-Attending Doctor



### SPRING ROTATION

#### monday

MORNING

Direct Patient Care, Portland VAMC

AFTERNOON

VA Contact Lens Clinic Intern Mentoring

#### tuesday

MORNING

Direct Patient Care at the Forest Grove  
Therapeutic Contact Lens Clinic

AFTERNOON

Instructor in Second Year  
Contact Lens Lab

#### wednesday

Direct Patient Care at the Portland  
Therapeutic Contact Lens Clinic

#### thursday

MORNING

Resident Conference

AFTERNOON

Research and Creative Work

#### friday

Direct Patient Care at the Forest Grove  
Therapeutic Contact Lens Clinic

### SUMMER ROTATION

#### monday

MORNING

Direct Patient Care, Portland VAMC

AFTERNOON

VA Contact Lens Clinic Intern Mentoring

#### tuesday

MORNING

Research and Creative Work

AFTERNOON

Instructor in Third Year  
Contact Lens Lab

#### wednesday

Direct Patient Care at the Portland  
Therapeutic Contact Lens Clinic

#### thursday

MORNING

Specialty Contact Lens Lecture

AFTERNOON

Direct Patient Care at the Forest Grove  
Therapeutic Contact Lens Clinic

#### friday

Direct Patient Care at the Forest Grove  
Therapeutic Contact Lens Clinic



## LIVING & RESOURCES

### Housing & Cost of Living

One bedroom apartments in the Portland metropolitan area average \$600-\$700 per month and two bedroom apartments average \$700-\$800 per month. Month-to-month lease options are commonly available in the Portland area. One bedroom apartments in Forest Grove average \$500-\$600 per month and two bedroom apartments average \$600-\$700 per month.

### Recreation

Portland has been described as the "city of books, beer, bikes and blooms," and offers numerous activities involving all of these aspects. Outdoor adventures abound with Mt. Hood, the Oregon Coast, forests and several rivers within 60 miles from the city limits. Portland's events and festivals provide new forms of entertainment throughout the year.

### Library & Research Resources

The resident is provided access to the libraries and computer databases of both Pacific University and Oregon Health and Science University. Access is provided to the College's in-house references including texts, journals, audio-visuals and computer-based resources. Residents are permitted to use the computer work stations in the Student Computer Room in Jefferson Hall and will receive audio-visual support in generating slides, videos, overheads, etc., for use in presentations or papers being developed as part of the residency experience. Access to the extensive ophthalmic library at Casey Eye Institute is also available.

### Computer Access & Email

Computers with Internet access are available for use in the school and library at Pacific University. The resident is assigned an email address.

## ELIGIBILITY CRITERIA

- 1 Candidates must earn the degree of Doctor of Optometry from a school or college of optometry accredited by the Accreditation Council on Optometric Education prior to the starting date of the residency program.
- 2 Candidates must pass all portions of the NBEO and attain Oregon state licensure prior to the starting date of the residency. Candidates do not need to be a U.S. Citizen.
- 3 Pacific University's policy of non-discrimination based on gender, race, religion, creed, national origin, sexual orientation or non-disqualifying physical disabilities will be strictly upheld during the selection process.

## CALL OR EMAIL TODAY

For additional information about these residency opportunities, please contact:

**Beth T. Kinoshita, O.D., F.A.A.O.**  
Residency Program Supervisor

### College of Optometry Pacific University

2043 College Way  
Forest Grove, OR 97116  
1-877-722-8648 ext. 3140

*[bkkinoshita@pacificu.edu](mailto:bkkinoshita@pacificu.edu)*