

Required APPEs

ADVANCED COMMUNITY

Emphasis will be placed on the student's ability to demonstrate their understanding of common disease states and treatment modalities as well as their ability to provide pharmaceutical care. Emphasis will also be placed on disease state management initiatives.



HEALTH SYSTEM

Students will participate in a variety of clinical activities, functioning as an integral member of the healthcare team. Emphasis will be placed on the student's ability to demonstrate their understanding of functional roles of health system pharmacy in providing consistent quality patient care.



INTERNAL GENERAL MEDICINE

Students will gain professional skills in an Internal General Medicine setting and will effectively participate in the patient care decision-making process. Students will participate in a variety of clinical activities, functioning as an integral member of the healthcare team.



AMBULATORY CARE

Students will participate in a variety of clinical activities, functioning as an integral member of the healthcare team. Emphasis will be placed on the student's ability to demonstrate their understanding of common disease states and treatment modalities as well as their ability to provide pharmaceutical care.



Elective APPEs

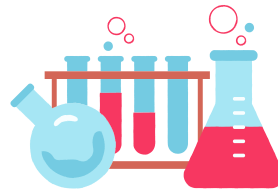
DIRECT PATIENT CARE ELECTIVE

This elective may occur in any setting where the student provides direct pharmaceutical care to patients. Examples of Patient Care electives include: Advanced Community, Cardiology, Critical Care, Oncology, Home Infusion, Infectious Disease, Long Term Care, Nutrition, Pediatrics, and Trauma Surgery.



PATIENT OR NON-PATIENT CARE ELECTIVES (2)

Students choose **two** patient or non-patient care electives. Examples of non-patient care electives include: Academia, Compounding, Drug Information, Managed Care, Pharmaceutical Industry, and Research. Elective rotations can also encompass any Advanced Community, Ambulatory Care, Internal Medicine, or Health System Rotation.



SELF-STUDY OR ADDITIONAL ELECTIVE

Students have one of three options:

1. Self-Study: Review for NAPLEX/MPJE
2. International Experience
3. Additional Patient/Non-Patient Care Elective

